

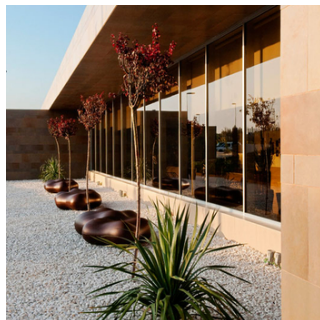
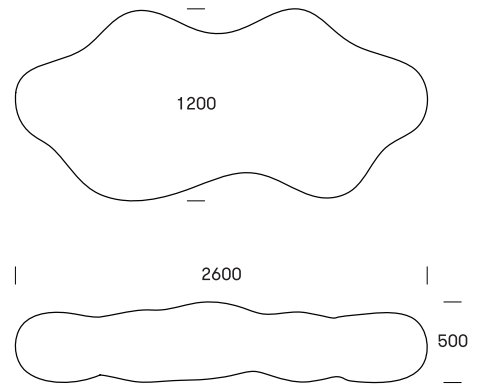
FACTS

LAVA # 173

LAVA invites informal breaks and creative expression on it and around it. This organic seating unit fits into urban spaces, parks, schools, institutions and company headquarters alike.

The highly inviting shape of LAVA attracts children and adults. Seats 5-7.

Design: Karim Rashid



TECHNICAL DATA

Material

Rotation moulded polyethylene, dyed. Moulded in one piece. UV-resistant, stands up to weather, wear and tear. The material is suitable for granulation and recycling.

Dimensions

L2600 x B1200 x H500mm
Weight: 40 kg

Mounting

Lava sits directly on the floor/terrain. Adjustable feet are provided for indoor use. Fittings for mounting must be ordered separately.

Maintenance

This product withstands most cleaning agents and chemicals and can be cleaned using a high-pressure cleaner. The colour can be revived using vinyl cleaner or similar.

Product code

173 0101 Lava Red/ 40kg
173 0103 Lava Orange / 40kg
173 0102 Lava Modo Green / 40kg
173 0143 Lava Beige / 40kg
173 0105 Lava Notte Blue/ 40kg
900 B021 Brackets for ground fixation
900 B031 Brackets for surface fixation

Standard colours (approx. RAL)



Red: RAL 3031



Orange: RAL 2008



Beige: RAL 1014



Modo Green: RAL 180 60 10



Notte Blue: RAL 5003